



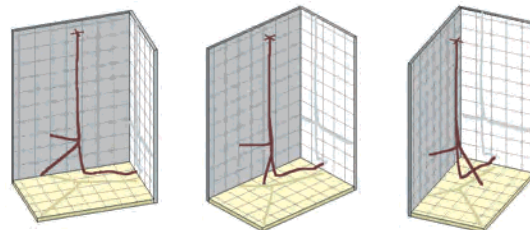
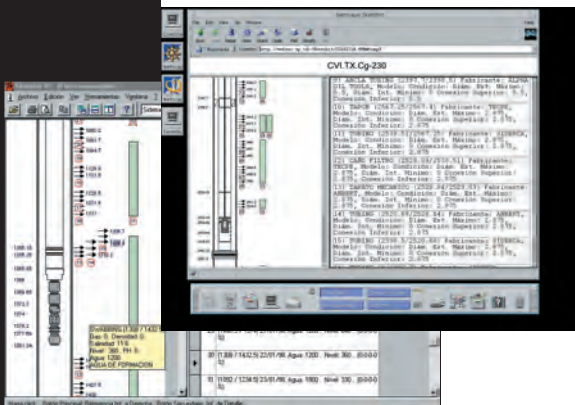
Sketchit™

INNOVISIÓN

Sketchit™

Sketchit™ is a powerful tool for displaying drilling, well-bore, completion and workover data in a graphical way. It also lets you browse through up-to-date information of the well and its history.

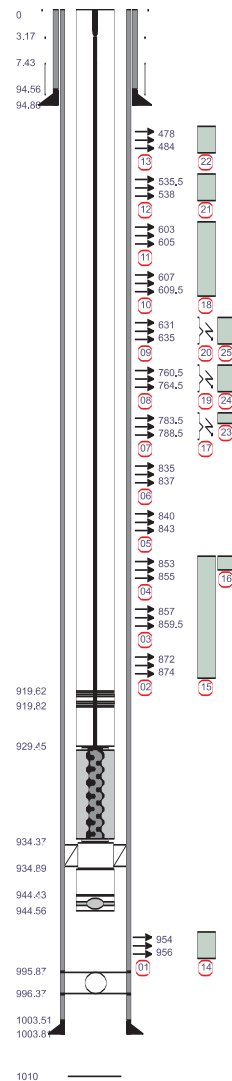
With it, geologists and engineers have an additional instrument to timely develop the best cost-effective design of their well.



Sketchit™ technology is implemented to be used in two different scenarios.

- The Windows version, that can be deployed in a stand-alone or client-server configuration, brings a powerful application to the desktop.

- The **WebSketchServer™**, which is an application that –installed on a Web server– lets you query **Sketchit™** information from any web browser running on any platform in your intranet, or through the Internet.



FUNCTIONAL SPECIFICATIONS

Sketchit™ allows you to schematically see the information about your wells. Designed with and for end users it assures productivity improvement in everyday operations.

With this tool, you will be able to quickly and easily query –in real time– the most up-to-date state of a well. Detailed information for each component is also available.

With **Sketchit™** you are able to see the well throughout its entire life: from original drilling to planned operations in a day-by-day or event fashion.

Thanks to its open, generic model, **Sketchit™** permits the graphical representation of the wellbore, installed components and operations done.

Multi-Well View lets you correlate data from different wells in a single pane.

TECHNICAL INFORMATION

Sketchit™ was designed to be integrated into your information workflow. Its versatile **ODBD®** technology (Open DataBase Definition) lets you configure **Sketchit™** to read data from whatever database and data model you are currently using in your company. You do not have to import or export any data, assuring that your technical staff has the most up-to-date information without wasting time gathering it.

The application draws all the components by taking them from a library that can be edited/generated with any popular drawing package. Its sophisticated graphics engine will scale them properly maximizing the comprehensibility of the diagram.

Sketchit™ may be launched and controlled from other programs. This permits its invocation from any other application such as GIS's and mapping software.